

AutomaTech™

The logo for AutomaTech features the word "AutomaTech" in a white, sans-serif font. The letter "o" is replaced by a stylized circular arrow graphic. The top half of the arrow is yellow and curves clockwise, while the bottom half is blue and curves counter-clockwise, creating a continuous loop.

AutomaTech Solution Brief

iFIX Project Management

October 2016 – SB-JDM-001A



AutomaTech Solution Brief

iFIX Project Management, for ease of use and flexibility



Because iFIX is made up of many files and folders, managing all those components can be a challenge:

- Not all the files in these folders are user created, and some of them are version specific. Also sometimes copying and pasting files between machines and projects can make matters worse.
- The LOCAL folder contains files that do not travel well.
- The PIC folder contains numerous files that are specific to version and SIMs.
- Applications can refer to user supplied files, and these may vary by version.



AutomaTech Solution Brief

iFIX Project Management, for ease of use and flexibility



The solution is straight forward:

Separate the project from the application!

- The application is the iFIX program itself, the project is the folders and files that make up your complete application.
- This is best done BEFORE doing anything else project related. This will keep the base install and the files that come from it “pristine.”

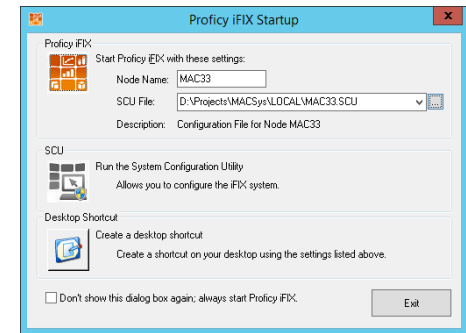


AutomaTech Solution Brief

iFIX Project Management, for ease of use and flexibility

Nothing besides an install of iFIX is required:

- Create a two tiered folder hierarchy level-1, Projects; level-2, your new project
i.e. D:\Projects\Test
- Use the iFIX start up screen to create the project. Start with the SCU and point the project folder to you newly created folder. Middle icon.
- Fill in the node name & path to SCU in the top section.
- Create a desktop link (shortcut) to launch your new project.



AutomaTech Solution Brief

iFIX Project Management, for ease of use and flexibility



Benefits:

There are several benefits to modularizing your iFIX project in this way.

- I. You can have multiple projects on one machine, each one isolated from the others.
 - a) This allows you to experiment or develop separately from the production system.
 - b) If the production system gets “corrupted” you can easily rebuild right next to it.
- II. Backing up your entire Project becomes a simple matter “Zipping” the folder, or Zipping the entire Projects folder for a full back up. Each project should only occupy a couple hundred MB.



AutomaTech Solution Brief

iFIX Project Management, for ease of use and flexibility



Supporting Materials:

- There are more details on setting up projects. Please refer to the link below.
- Link to iFIX Project management:
<https://automatech.box.com/s/oc5vj37o871ewt2pgzhsrmvmikdpfzp1>
- For questions contact AutomaTech Technical Support @ 508-830-0088 X3 or support@automatech.com



AutomaTech™



Thank you! Please contact AutomaTech or visit www2.automatech.com/solution-briefs for additional information on future Solution Briefs and technology

