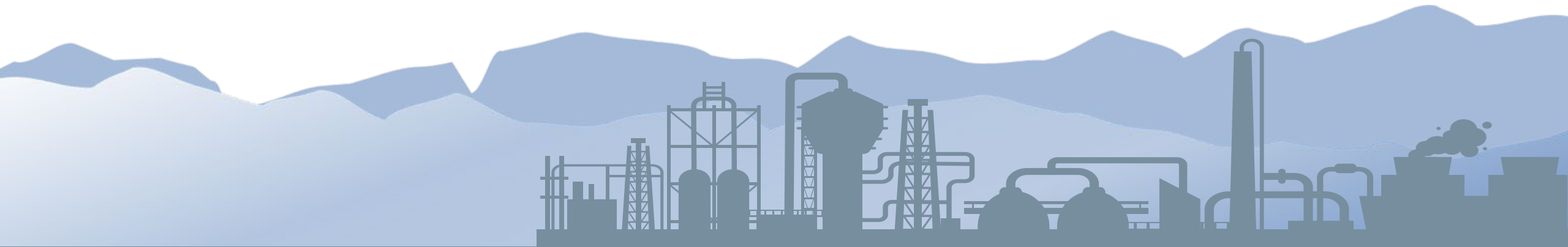


Visualizing & Analyzing Historian Data using Proficy Operations Hub

February 24, 2022



Presented by:



Hayes Pierce
*Senior Solutions
Architect*
AutomaTech



Steve Szamocki
*VP & General
Manager*
AutomaTech



Amy Wooten
Product Manager
GE Digital

Safe Harbor Disclaimer

The information presented is intended to be an outline of general product direction and it should not be relied on in making a purchasing decision. The information on the roadmap is for information purposes only and may not be incorporated into any contract and is not a commitment, promise or legal obligation to deliver any material, code, or functionality. The development, release, and timing of any features or functionality described for our products remains at our sole discretion.

This contains GE proprietary information, and the recipient is not authorized to disclose such information to third parties

Topics

- About Us
- Challenges
- Historian & Ops Hub Updates
- Use Cases for Decision Support
- Questions & Wrap Up
- Wine tasting with Rachel DeAmbrose

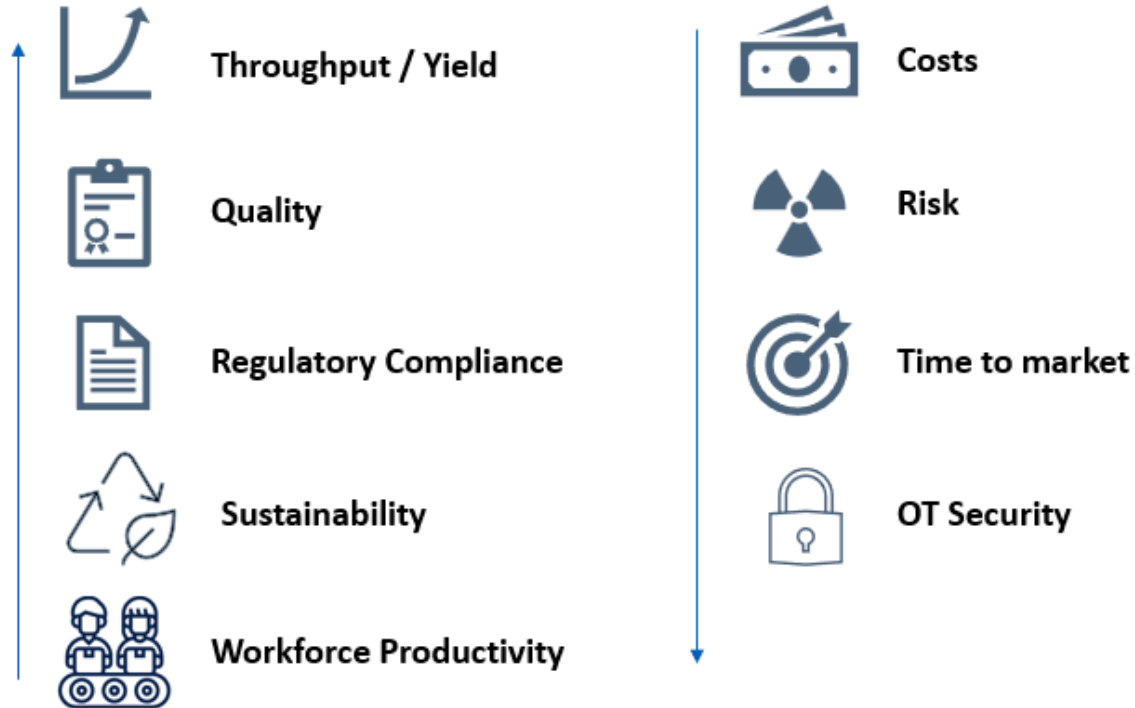


— About Us



Steve Szamocki
VP & General Manager
AutomaTech

Solving Tough Problems



If you drove to work, used a computer, drank a glass of water or coffee, ate a cranberry, changed a diaper, ate a bowl of ice cream, bought composite wood, used something made of plastic, received a covid 19 vaccine, used perfume, drank cola, applied makeup, seen a solar panel, visited a hospital, flushed a toilet, ate a chocolate bar, turned a light switch on, or used a 5G phone then **you, your families, & communities** have benefitted from a AutomaTech Solution.

Have a positive community impact... every time all the time

Solutions We Provide



Controls & SCADA Automation

- PLCs
- HMI/SCADA
- Mobility & Remote Connectivity
- Automated Data Collection & Reporting
- Alarm Notification
- Enterprise SCADA Consulting



Manufacturing & Information Systems

- Manufacturing Execution Systems (MES) & Consulting
- Enterprise Data Collection, Reporting & Visualization
- Advanced Analytics & AI



Industrial Internet (IoT) & Cloud Solutions

- IoT EDGE Connectivity
- Remote Monitoring & Diagnostics
- Equipment Optimization
- Asset Performance Management (APM)



Systems & Network Infrastructure

- High Availability & Fault Tolerant Servers,
- Virtualization, & Disaster Recovery
- Thin Client Infrastructure
- Industrial Networking

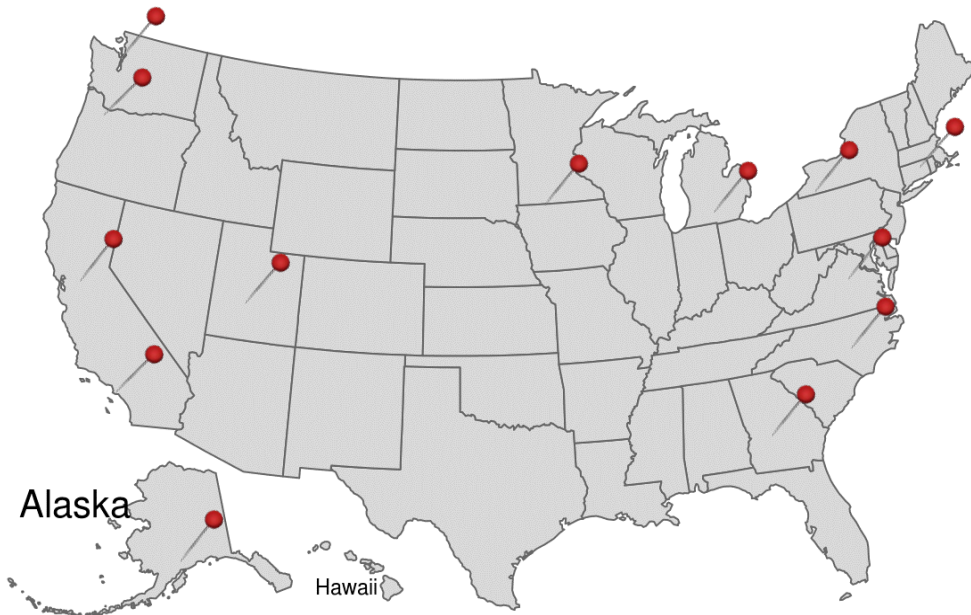


OT Cyber Security

- Cyber Security Assessments
- Intelligent Security Appliances
- Identify Defined Networking
- Industrial Firewalls & VPNs

Securely we help..connect | control | visualize | analyze | optimize

Supporting Customers



- CB Pacific & Automate are part of Flow Control Group Automation spanning North America
- Part of KKR – 3rd largest private equity group – 665B of enterprise value
- 25 year + partner with GE **GE's largest license supplier** of SCADA solutions globally.
- Comprehensive support services with **the most experienced SCADA Solution Architects** and Engineering support team in N.A.
- Well-established network of Cimplicity Solution Providers to deliver a complete solution including design, installation and commissioning
- Certified training services, seminars & webinars, user conferences & workshops, value added services

Challenge: Right Information for Decision Support

Poll Question #1



**A more connected
workforce improves
problem solving times!**

- Operators
- Maintenance
- Engineering
- Quality
- Plant Management

Operators



- Respond to issues
- Equipment status monitoring
- Out of process notifications

Maintenance



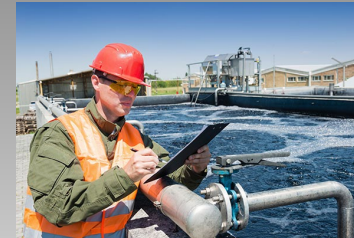
- Pareto equipment breakdowns daily
- Improve MTBF / MTTR
- Be alerted to critical breakdowns
- Predict breakdowns before they happen

Engineering



- Trend process data
- Design solutions for team members
- Predict and prevent downtime
- Drive plant efficiencies

Quality



- Paperless Water Quality Checks
- Historical Data to drive 5 Why / CI process
- Trend large amounts of data with digital playback

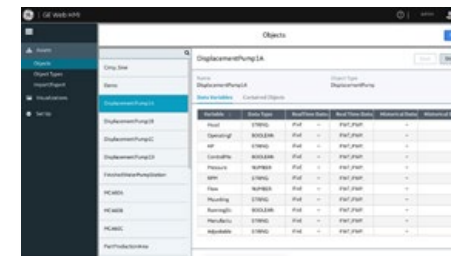
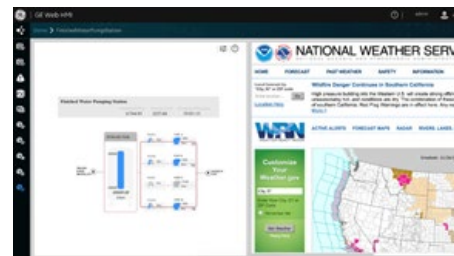
Plant Management



- Exception based management
- Team collaboration
- Electronic reports & process status in near real-time



GE Historian & Ops Hub



— Historian



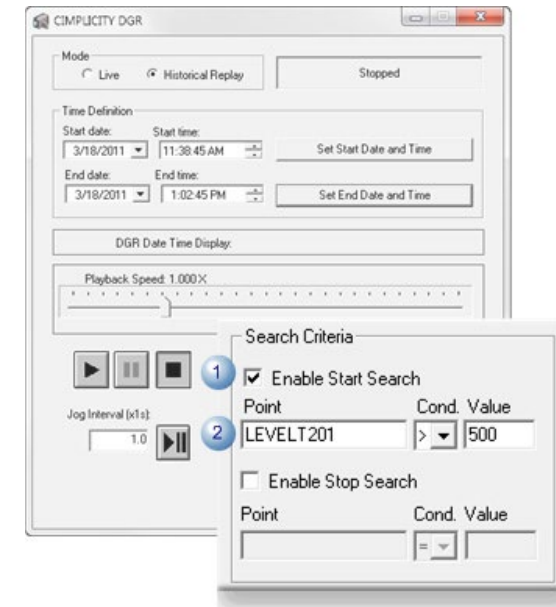
Hayes Pierce
Senior Solutions Architect
AutomaTech

Scalable Historian for iFix & CIMPlicity Customers

Why Proficy Historian 2022

Reasons for a Historian

- 1 Log, Store, and Retrieve **large volumes** of process and equipment information
- 2 The Historian is your “source” for plant and process information
- 3 If you trend information (real-time or historical) you need a Historian
- 4 Strong Integration between GE SCADA and Historian Product – save deployment and use costs.



Poll Question #2

Proficiency Historian—Enterprise Data Management

On Prem, Cloud Native and Hybrid

Key Themes

Enhanced System Management & Connectivity

Modern UX, IoT connectivity

Portfolio wide HTML5 based System Administration of widely distributed systems and high scale deployments

- System Health Management
- Best in class distributed systems with modern adr tools, remote server management
- Rich Python support
- MQTT and Kafka support
- Kubernetes management delivers zero downtime upgrades and High Availability deployments

Enhance data value extraction

Model context and open interfaces

Federated Asset Model Across the portfolio

- OPGUA Model Context
- Model synchronization
- Model context exposed via rest
- Hi performance interfaces to BI and analytics platforms

Bridging the plant floor to the cloud –at enterprise scale

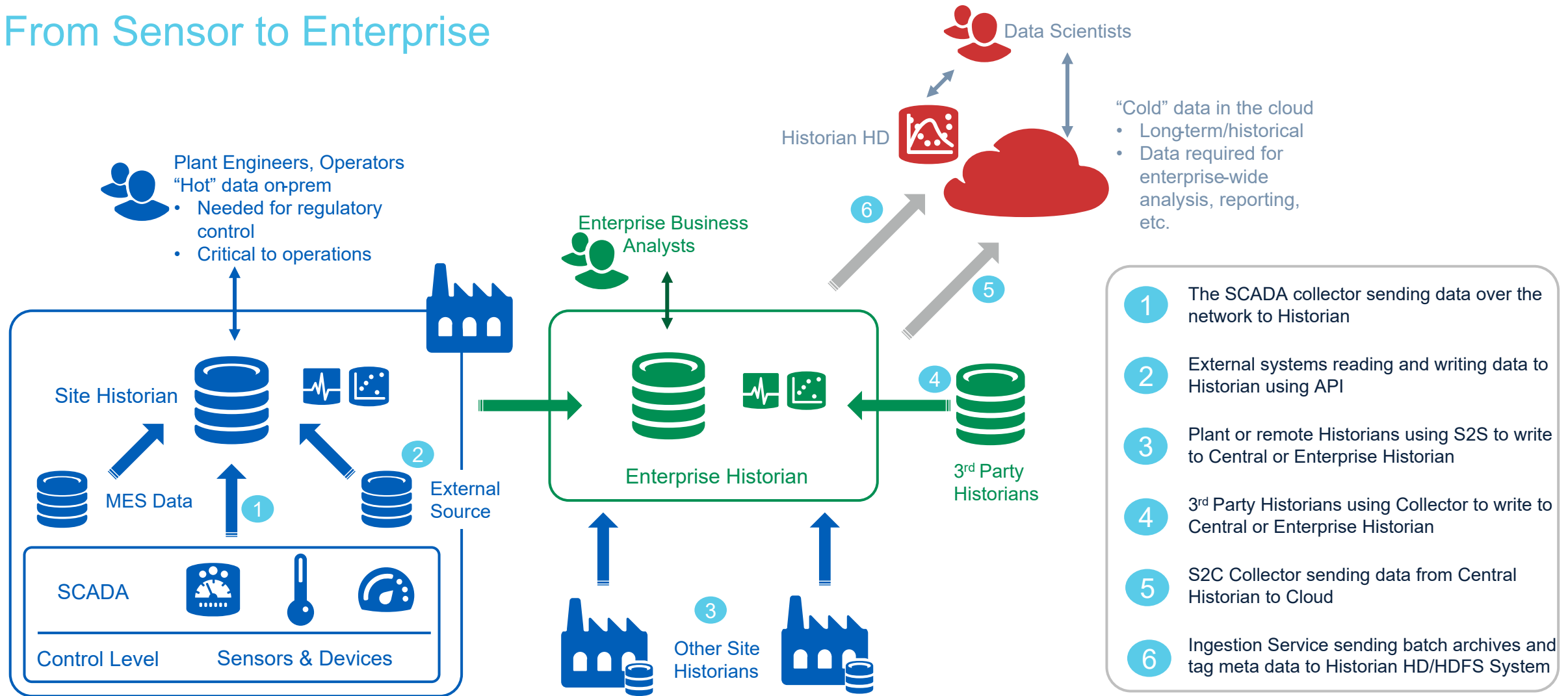
On Prem, Cloud Native and Hybrid

Expand on current onprem to 3^d part cloud leadership to deliver complete deployment model flexibility and adaptability

- Cloud native Historian (AWS and Azure) w/cloud autoscaling, availability, and data replication
- Identical client interfaces onprem vs cloud
- Cloud service integrations (data lakes, analytic platforms)
- On prem with cloud storage to full on cloud
- Easy migration from onprem to cloud

Lower Cost Flexible & Scalable Architecture

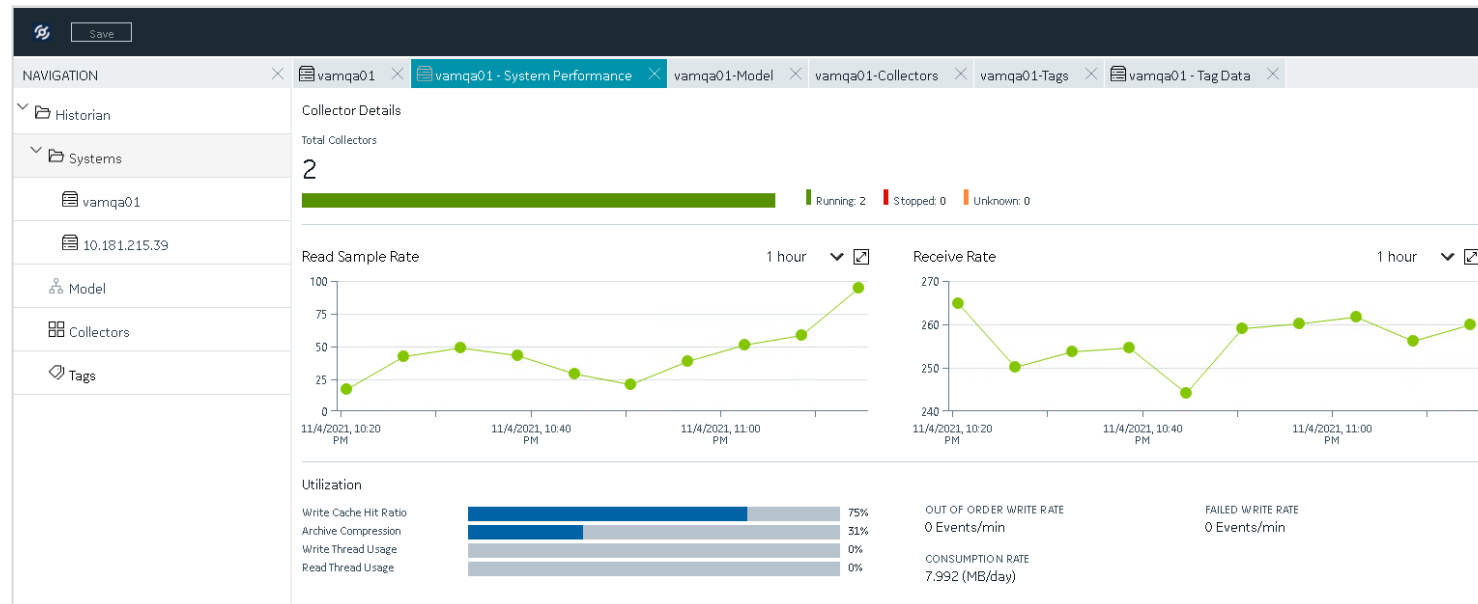
From Sensor to Enterprise



Scalable Historian for GE SCADA Customers

Proficy Historian 2022

- Best in class management of enterprise scale systems (up to **100MM** tags) and widely distributed applications with 1000's of data sources.
- Historian is **33x more efficient** on disk than other vendors
- **Improved Integration:** Web based Administrator (Configuration Hub), Proficy Installer, Proficy Authentication
- **Significant improvement** in Collector throughput (Multithreaded - CIMPLICITY collector performance 150K/s)
- New Python based Calculation Collector
- Asset Model Service enables creation of model context associated with Historian data

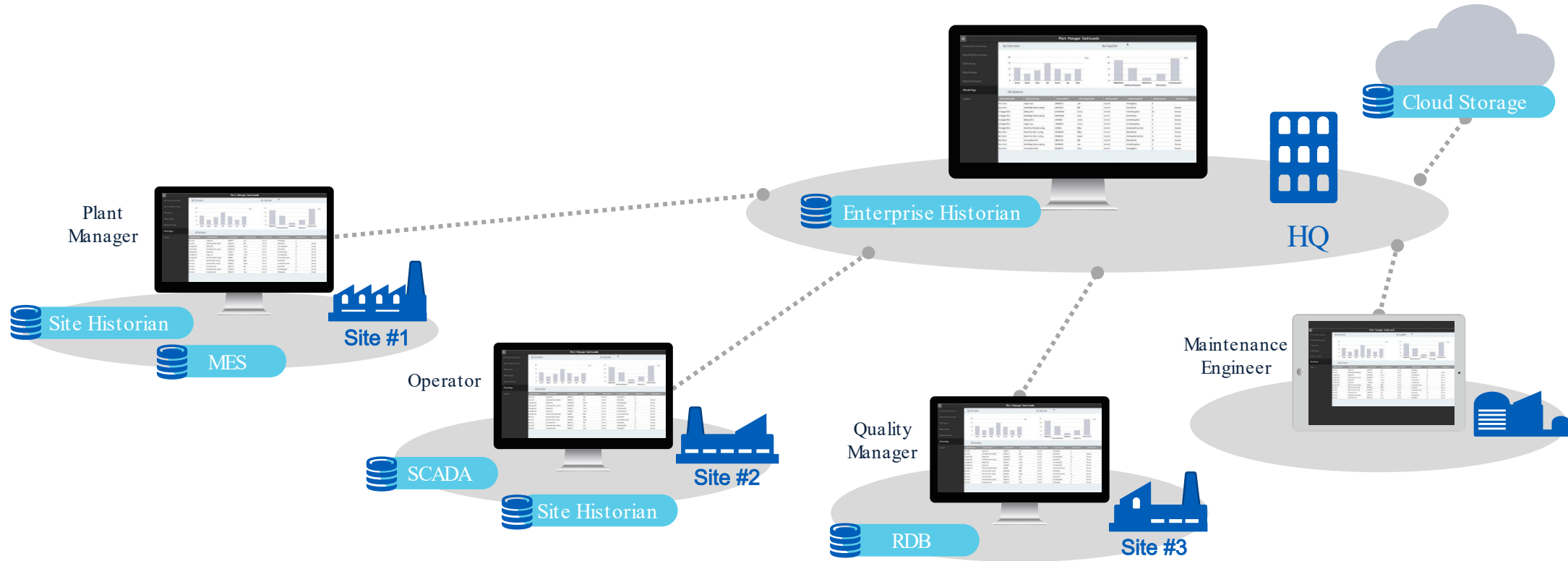


— Operations Hub



Amy Wooten
Senior Product Manager
GE Digital

What's the Big Idea?

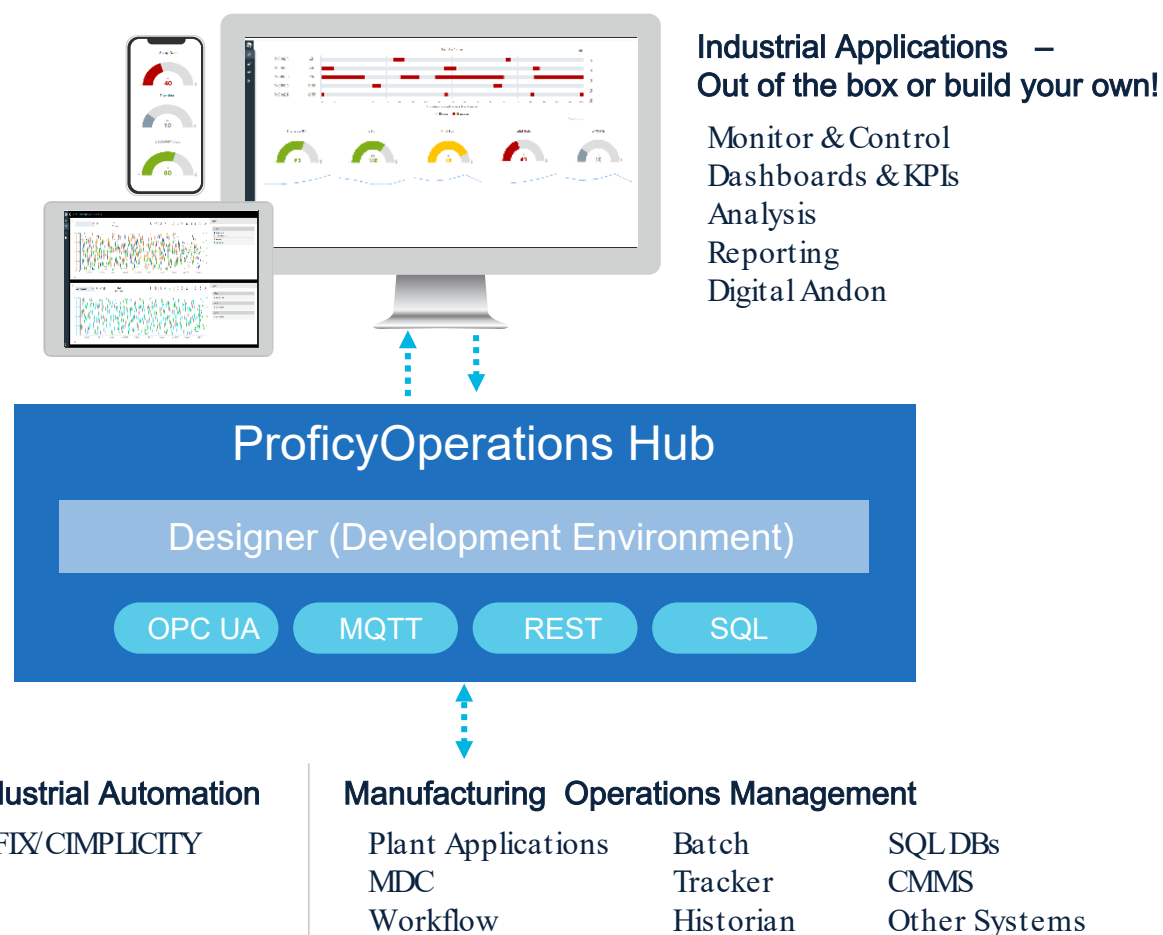


“I don’t have to worry about where the information is as long as I can access it when I need it!”

Proficiency Operations Hub

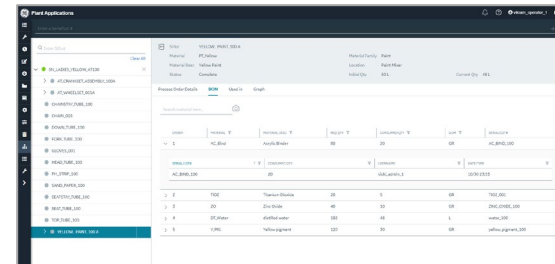
A centralized environment to rapidly build industrial applications, enabling plant operations, analysis, and decision making for plant personnel across the enterprise.

- Accessibility to information- Access your data any time, anywhere
- Enable creation of high performance displays
- Centrally manage visualization layer across your enterprise
- Get additional value out of existing investment in GE Proficy products
- Operations Hub built leveraging domain expertise from Proficy products

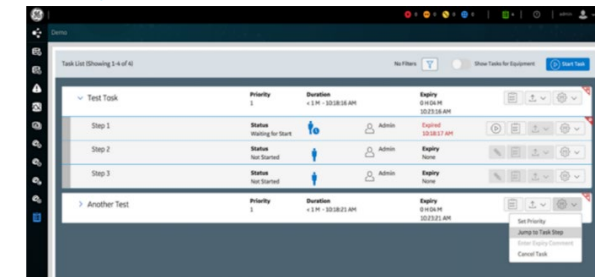


Reduce Time to Value with Out of the Box Apps

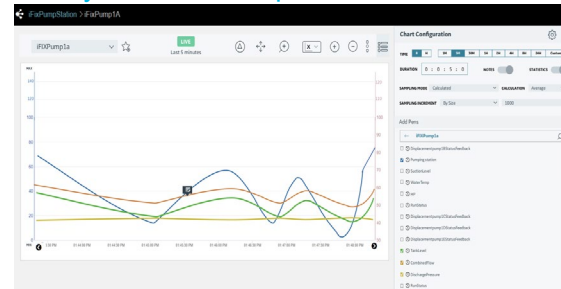
Proficiency Plant Applications in Operations Hub



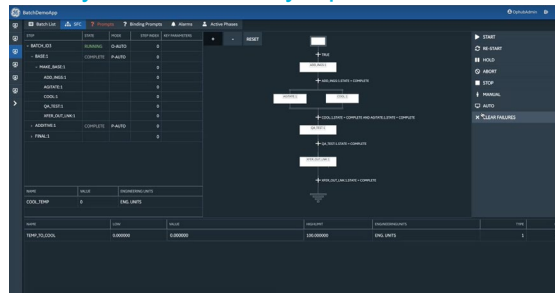
Proficiency Workflow in Operations Hub



Proficiency Historian in Operations Hub



Proficiency Batch in Proficiency Operations Hub



Custom



Plus your custom content

Development Environment

Data Management

Modelling: Entities and Pivot Tables

Queries, Events and notifications

WYSIWYG App Builder

Responsive layouts (web, mobile, tablet)

Visual Widget library with Drag and Drop configuration

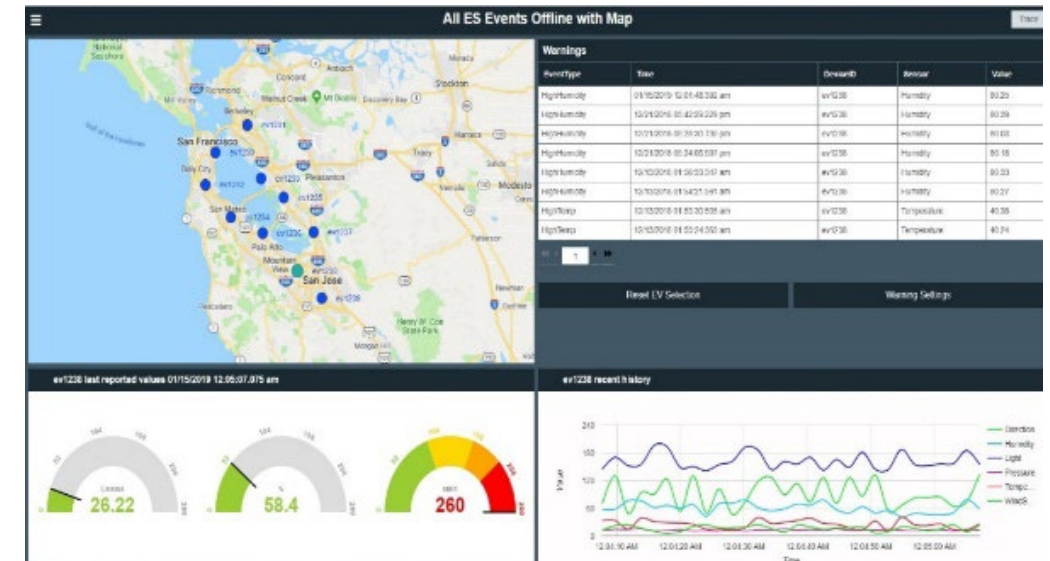
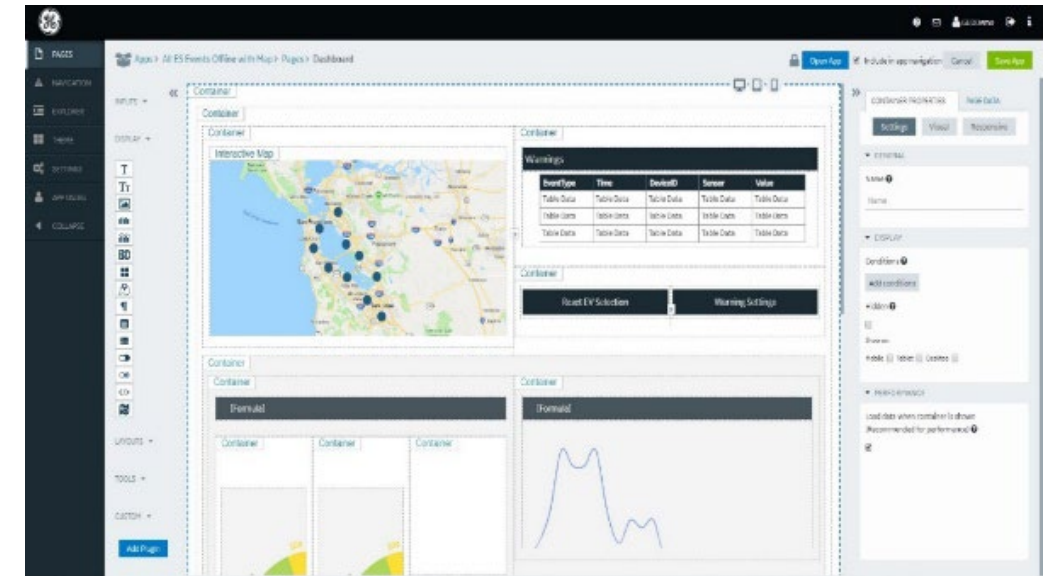
Actions: Store user selections, navigate, etc

Conditions: Show/hide widgets

Formulas: Format data, build URLs for widgets

Role based permissions

SDK: Custom Widgets & Entities REST API



Providing Visibility For Decision Making Outside the Control Network

Dashboards (OTBI)

Design your screens with our suite of widgets

Big Data

Button

Camera

Check Box

Container

Dropdown

Event Settings

Graph

Grid

Gauge

Header

HTML

Image

Input

Interactive Map

List

Map

New Line

Radio Button

Repeater

Separator

Slider

Table

Text

Text Area

Toggle

Trend Chart

+ More each release!

Mimic Card

Alarm Card

Bullet

Time display

Gauge

Timeline Chart

Indicator

Data Grid

Pareto Chart

Value

Sparkline

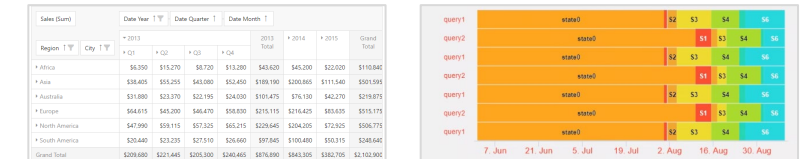
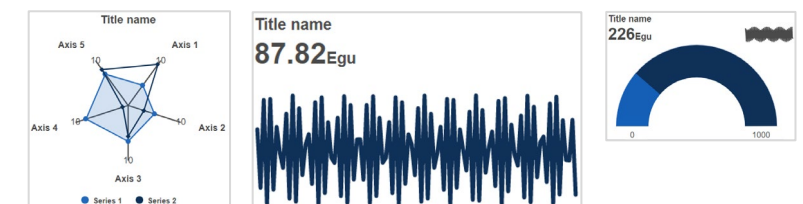
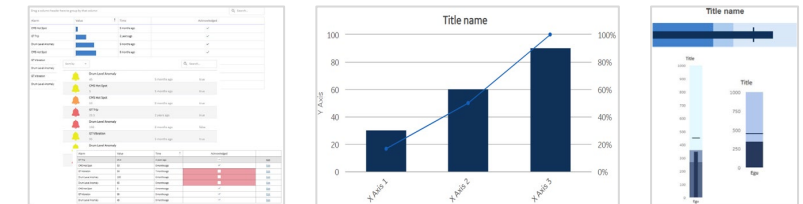
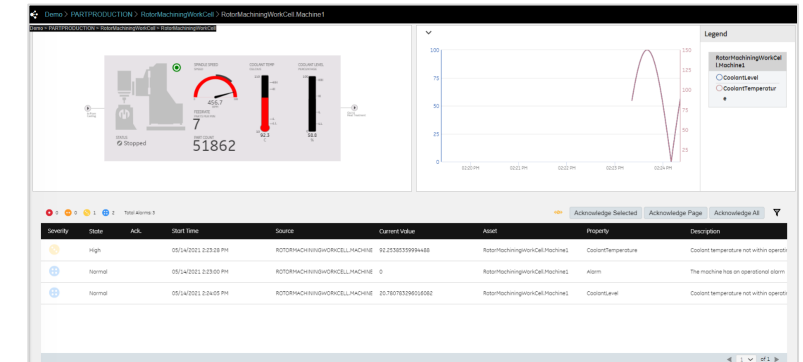
iFrame

Drop Down

Multi timeline

Spider

Variwide



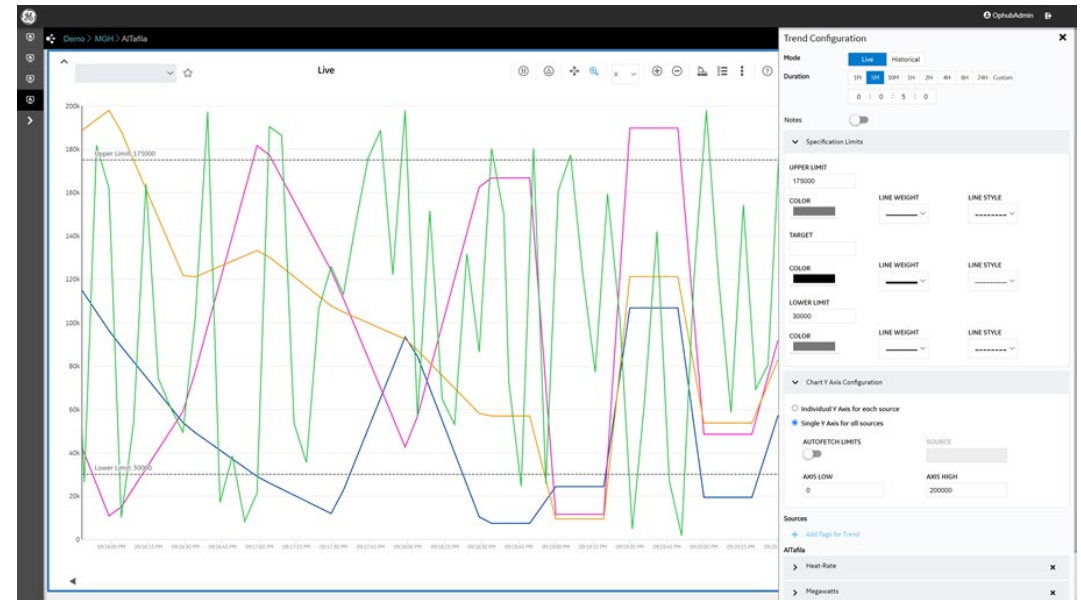
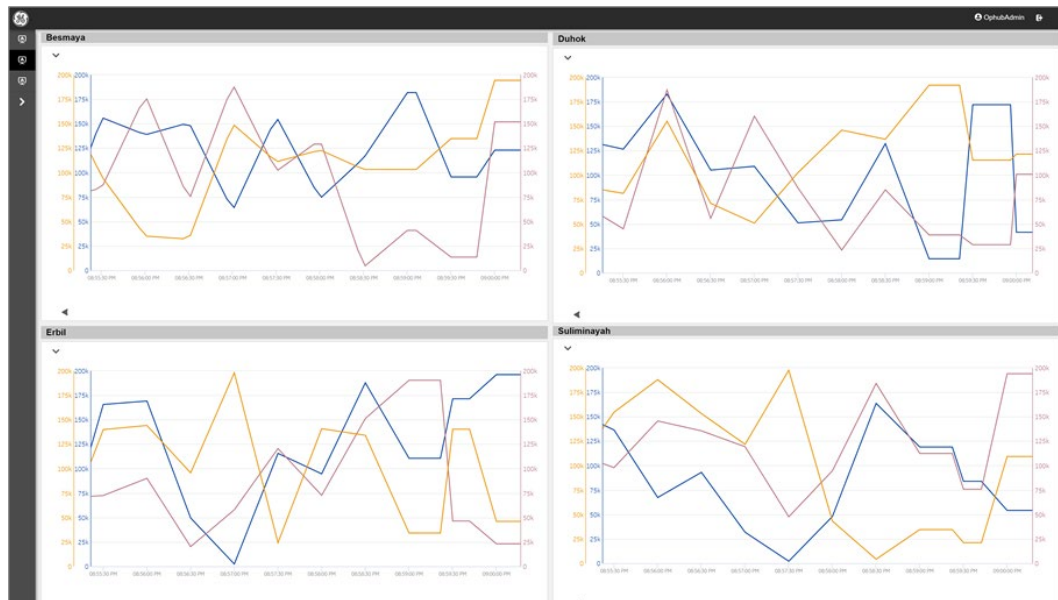
Enhance Value Extraction from Data Historian Analysis (OTBI)

Trend Widget

- Designer Configurations
- Real Time and Historical Data
- Time presets
- Annotations
- Statistics and Delta mode for quick comparison
- Saved views-Favorites

NewPivot Grid for Data Analysis

		2013				2013 Total	2014			Field Chooser	
		Q1	Q2	Q3	Q4		Q1	Q2	Q3		
Africa	Cairo (EGY)	3310	8440	3340	5400	20490	5020	6370	52	<div> <div>All Fields</div> <div> <input checked="" type="checkbox"/> Amount <input checked="" type="checkbox"/> City <input type="checkbox"/> Country <input checked="" type="checkbox"/> Date <input type="checkbox"/> Id <input checked="" type="checkbox"/> Region </div> </div>	<div> <div>Row Fields</div> <div>City</div> </div>
	Pretoria (ZAF)	3040	6830	5380	7880	23130	4740	5230	71		
Africa Total		6350	15270	8720	13280	43620	9760	11600	123		
Asia	Beijing (CHN)	12270	15780	18780	25140	71970	18960	21420	261		
	Seoul (KOR)	11825	17275	10050	8500	47650	17450	15500	168		
	Tokyo (JPN)	14310	22200	14250	18810	69570	19410	11370	194		
Asia Total		38405	55255	43080	52450	189190	55820	48290	625	<div> <div>Column Fields</div> <div> Date Region </div> </div>	<div> <div>Data Fields</div> <div>Amount</div> </div>
Australia	Melbourne (AUS)	11340	14130	9915	10350	45735	7035	13770	76		
	Sydney (AUS)	20540	9240	12280	13680	55740	11460	8800	64		
Australia Total		31880	23370	22195	24030	101475	18495	22570	141		
Europe	Berlin (DEU)	14725	16150	14825	16750	62450	19500	16800	167		



HMI For Plant Personnel

HMI Widgets

Mimic & Alarm

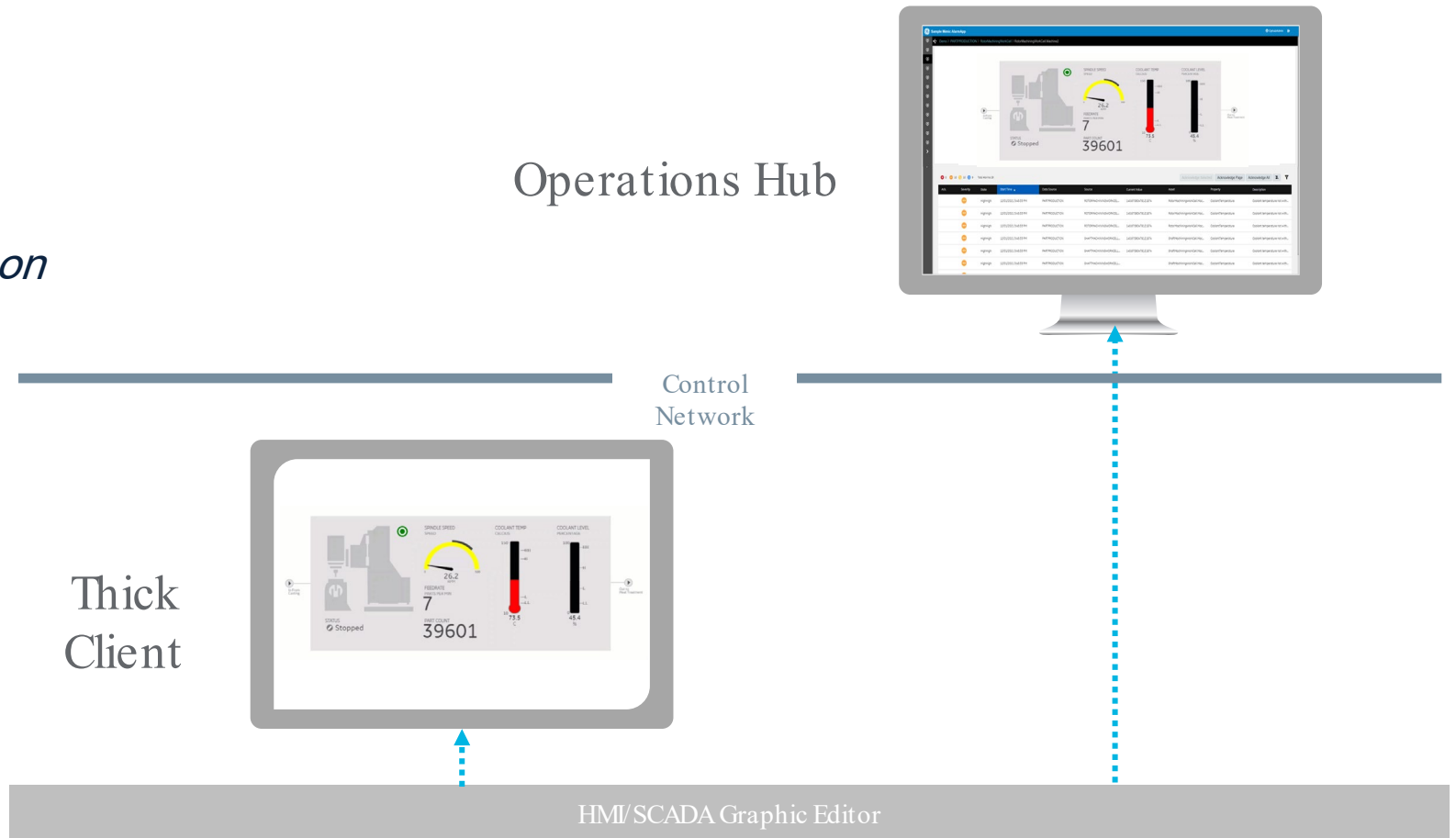
GE Proficy Simplicity and iFix

Webpace

GE Proficy Simplicity, iFix coming soon

Batch Widgets

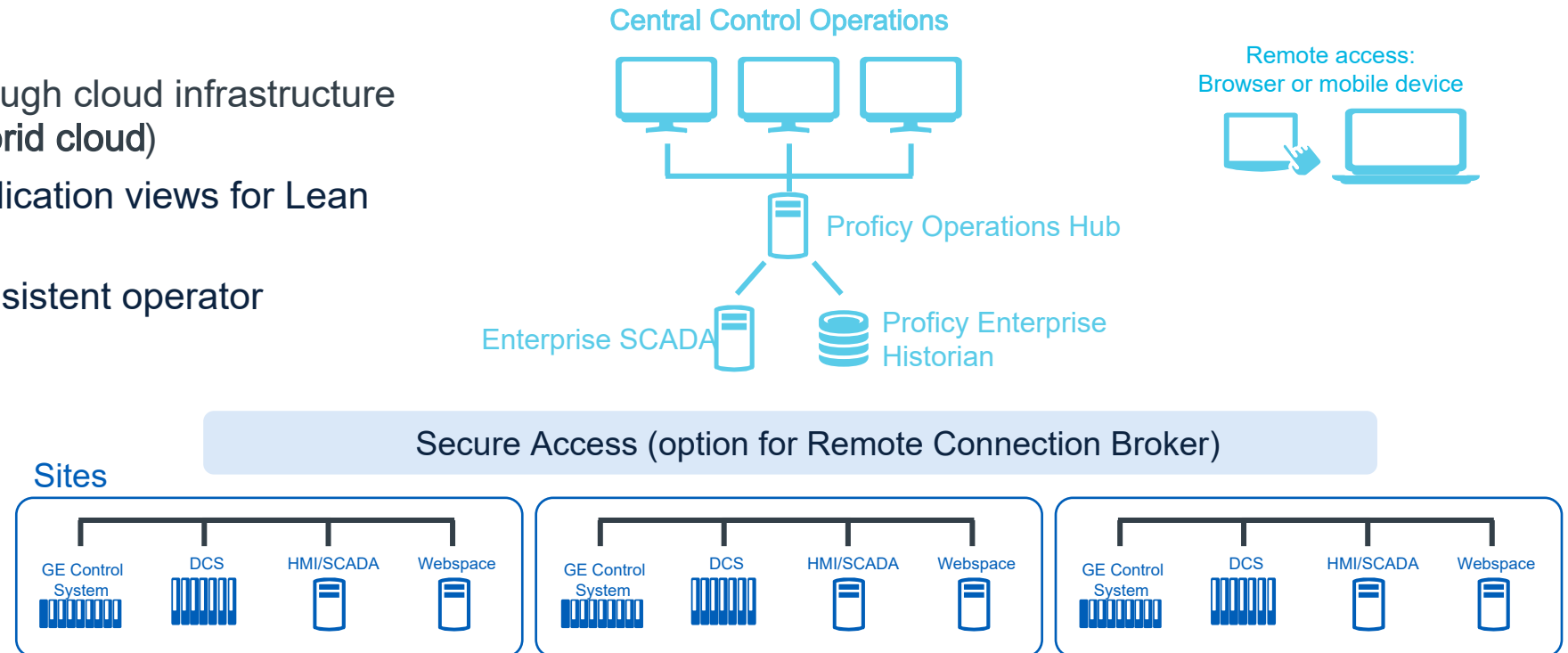
GE Proficy Batch



Centralized & Remote Operations

A single access point for SCADA & other plant applications to **reduce operational costs and enable remote access**

- Reduced hardware costs through cloud infrastructure (Azure VM, AWS VM and hybrid cloud)
- Provide multi-site or multi-application views for Lean operations
- Reduced training through consistent operator experience



Proficy Operations Hub and Proficy Historian provide centralized web access and centralized data storage

— Operations Hub Use Cases

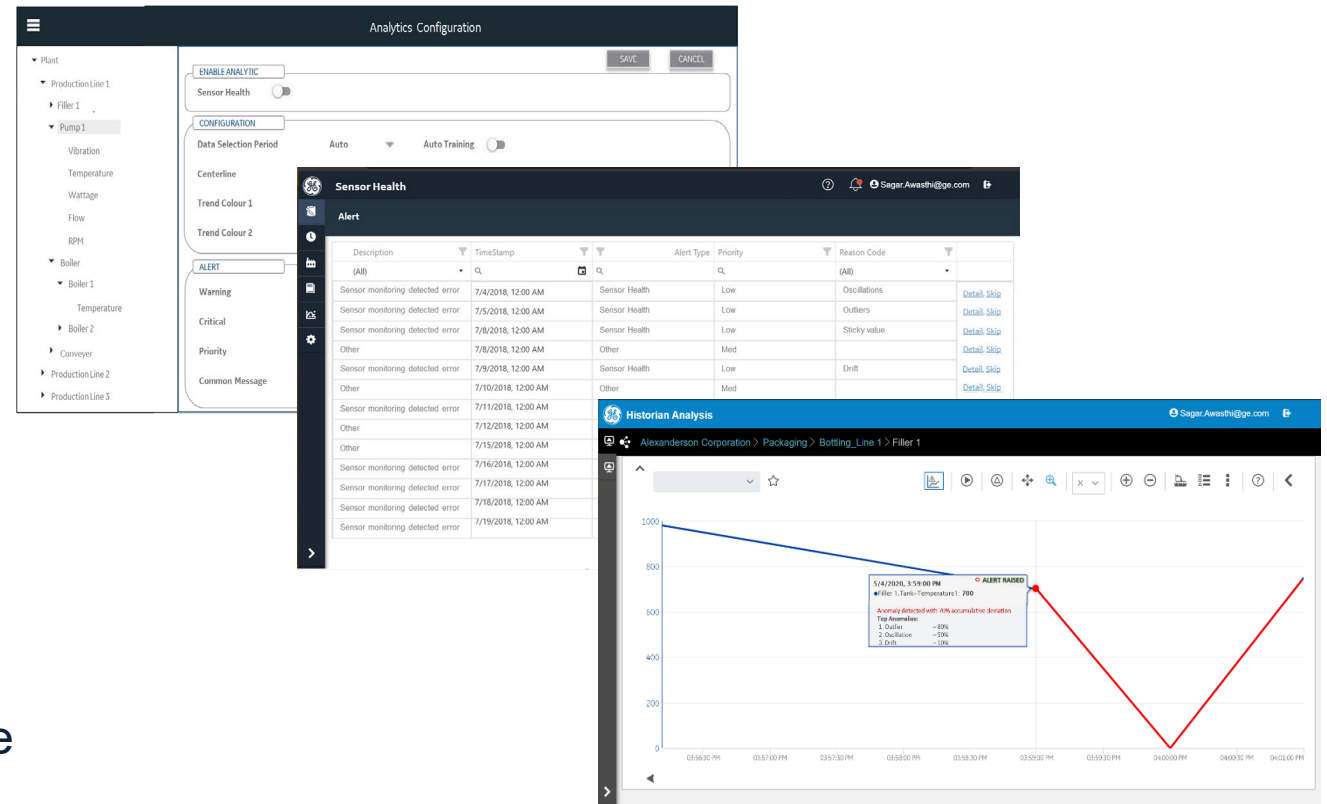


Hayes Pierce

Senior Solutions Architect
AutomaTech

Operations Hub is flexible and Powerful enough to provide immediate value—Just a few applications

- Single Pane Of glass Dashboarding for Site and managers
- Empowered Operator Right Data to the Right Person at the Right time
- Production Downtime/OEE Information
- Multi-Site Monitoring
- Process Analysis Applications
- Inventory Dashboards
- Chemical Feed System Monitoring
- Lab System Monitoring
- Historical Data Trending and Analysis
- Manual Data Entry / Operator or Maintenance Rounds
- Mobile Device Access out of the box Bring Your Own Device



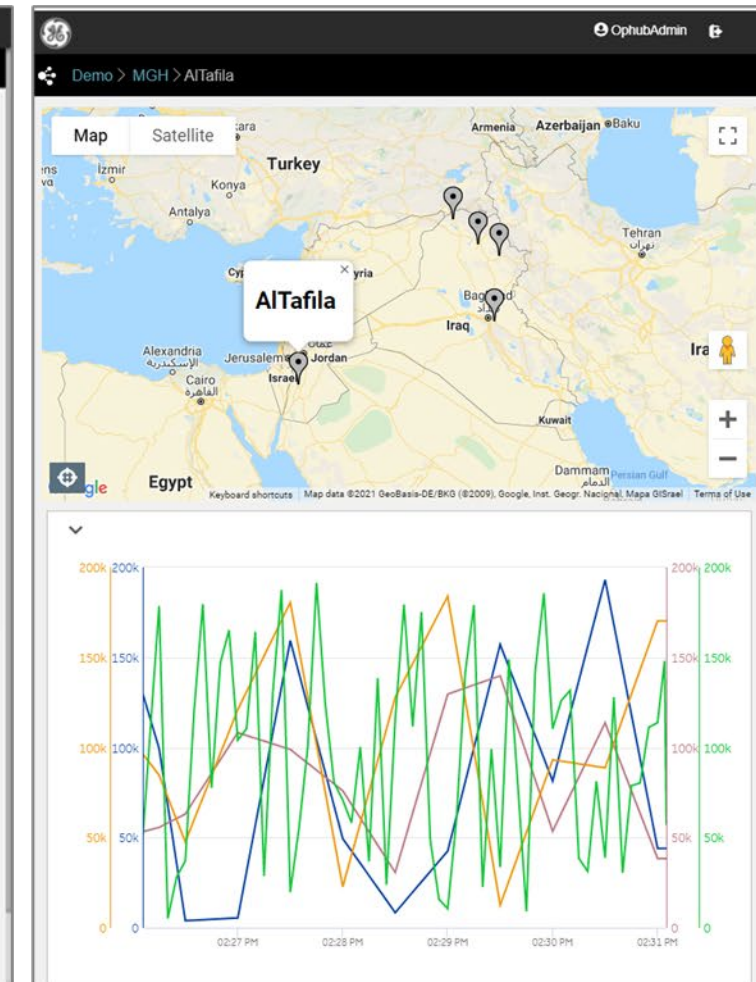
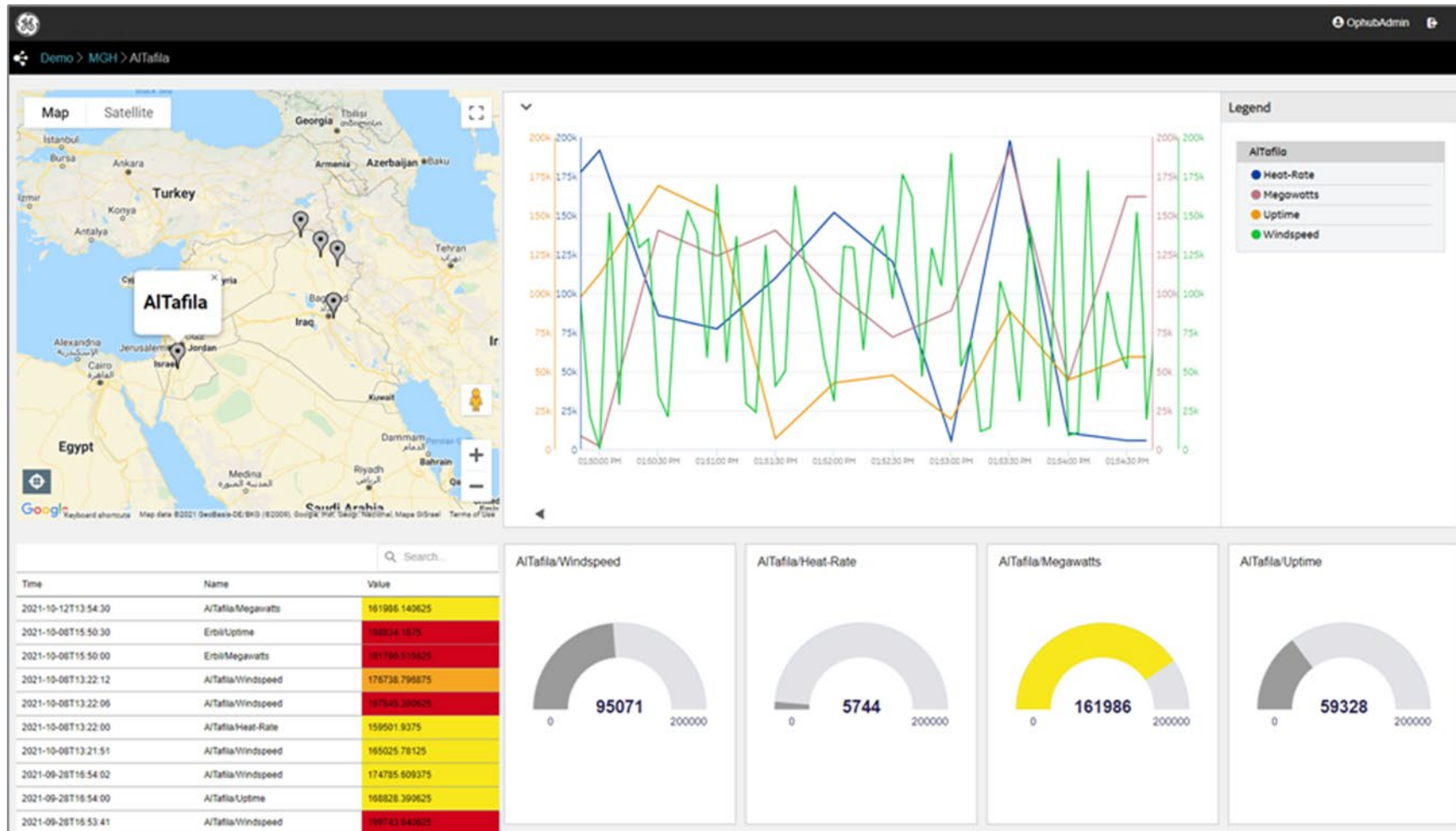
Example: Monitoring Across Sites



Plant Manager – How is my plant performing?

Plant Level focus on
Safety, Labor, On Time Delivery, Throughput, Efficiency, Quality

Tablet View



Example— Monitoring Performance of Presses on Plant Floor



Operator – How are my machines running?

Equipment status monitoring, responding to issues

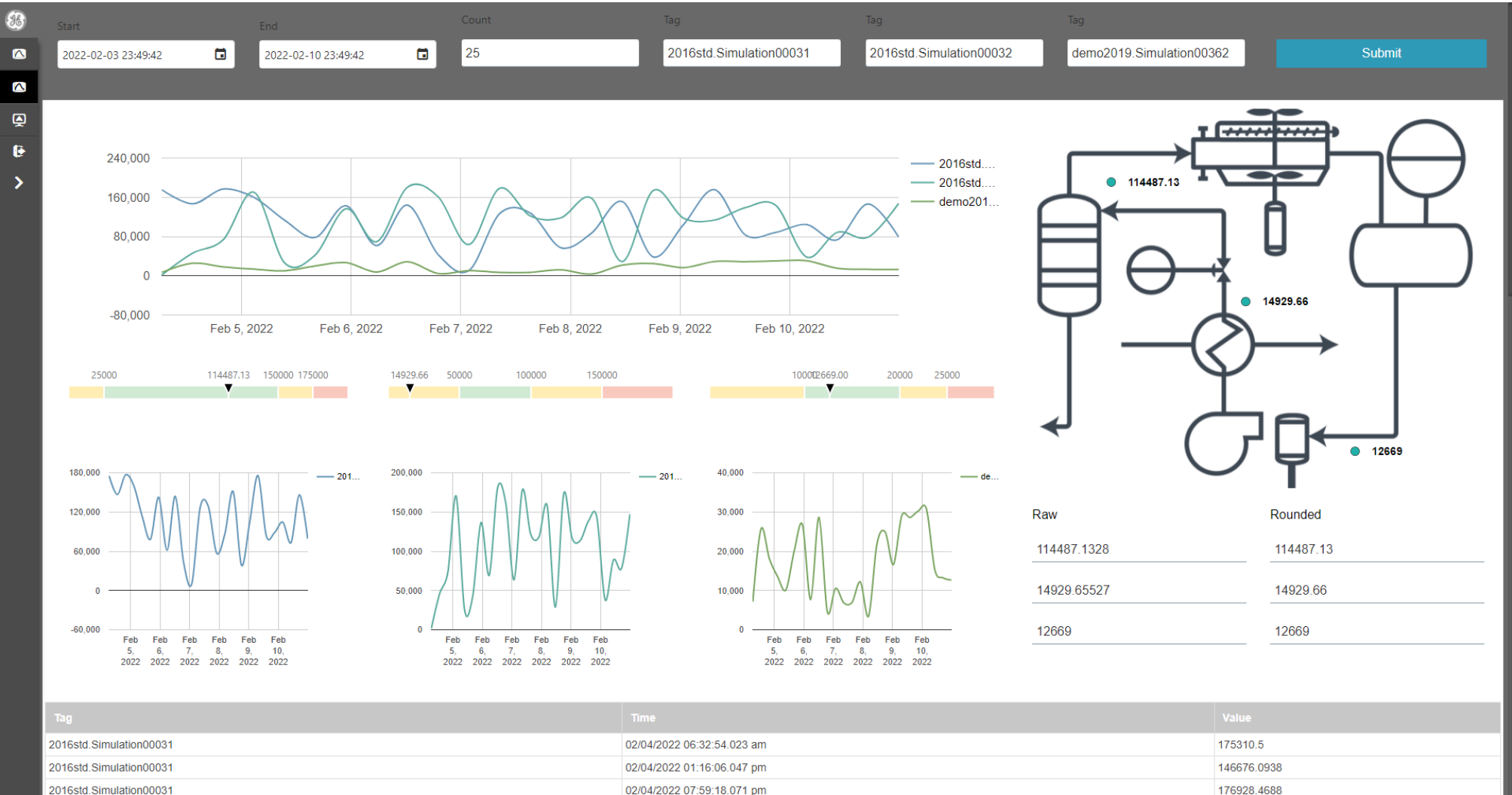


Example— Process Analysis



Process Engineer – How can I fine tune system performance?

Drive plant efficiencies, predict and prevent downtime, trend process data

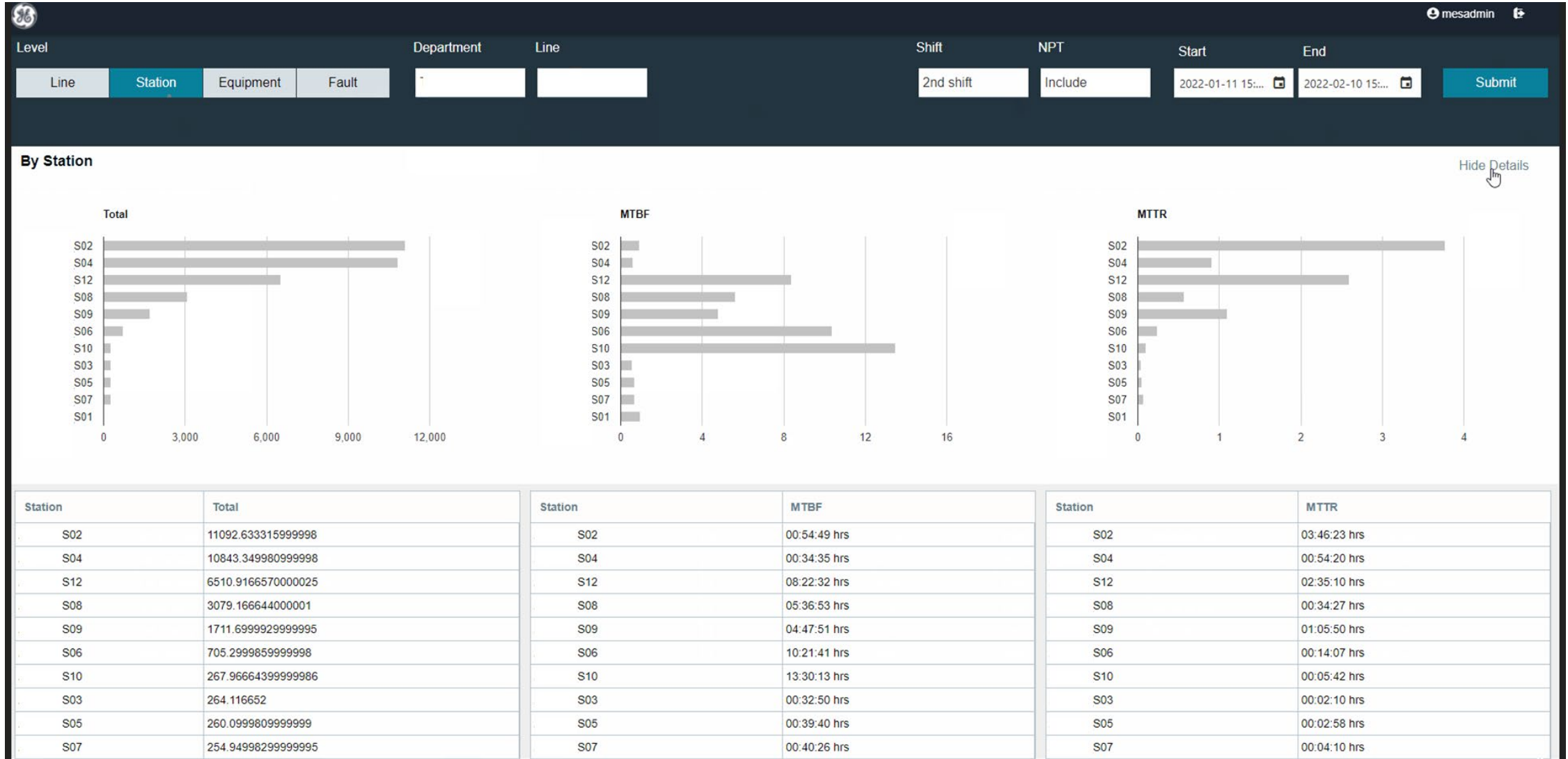


Example— Downtime Fault Report



Process Engineer – How can I fine tune system performance?

Be alerted to critical breakdowns, predict breakdowns before they happen, improve MTBF / MTTR



PHARMACEUTICAL | HISTORIAN | NORTH AMERICA

Increased Visibility for all areas of the operation.



Challenge

Provide data visibly to a broader audience above the SCADA and control layer - outside of the firewalled manufacturing network.

Action

Replicated Historian and SQL data to a server in Corporate network layer. Used Operation Hub to create and Enterprise Application used at many levels of the organization.

Result

- Data was contextualized in an asset model to make things easy to find.
- High performance web pages any browser can use with no user limits
- The app is used enterprise wide at many levels.
- Informative Dashboards Increased Operational Efficiency.



ELECTRIC UTILITY | HMI/SCADA | BELGIUM

Improved operations scheduling and maintenance compliance.

Challenge

Data from 70+ Cogeneration sites in different formats. Needed low-cost aggregation method with High security access and unlimited users.

Action

The system was designed using IoT concepts with Historian, SCADA and Web Displays to perform central alarm and data logging allowing ENGIE to perform detailed energy reporting.

Result

- Ability to guide maintenance of third-party suppliers and to control the energy injection at the most favorable time of the day.
- Allow OAUTH access to many users, vendors, and contractors.

WATER/ WASTEWATER | HMI/SCADA | NORTH AMERICA

Increased operator efficiency and improved operations reliability



City of San Luis Obispo, CA

Challenge

Provide a modern and efficient UX for operations personnel at five different locations, all with different control systems.

Action

With the help of CB Pacific, existing iFIX installations were upgraded. A Web UX was created to remotely monitor, supervise, manage their five facilities.

Result

- New HMI design increases operator performance, enables faster problem identification, and reduces reaction time
- Increased visibility and control using mobile devices – information delivered anywhere, any time
- Ability to create their own views without asking IT
- Increased compliance to local standards

— What's Next



Steve Szamocki
VP & General Manager
AutomaTech

What's Next

Poll Question #3

What would you like next?

- Technical lunch and learn with your team.
- Immediate need - please call me.
- Onsite assessment so we can get started.
- More details on getting a demo software to evaluate.
- Do Nothing

Upcoming Events

- Plants Apps: 3/17/22
- Local Field Events To Be Announced

ANY
QUESTIONS
?

— Wine Tasting



Rachel DeAmbrose
Certified Sommelier